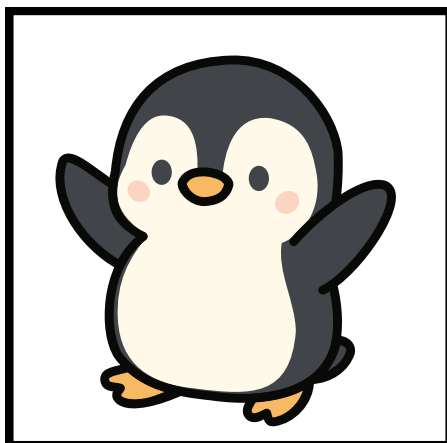
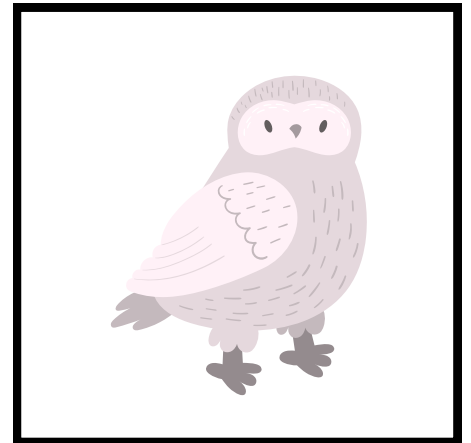
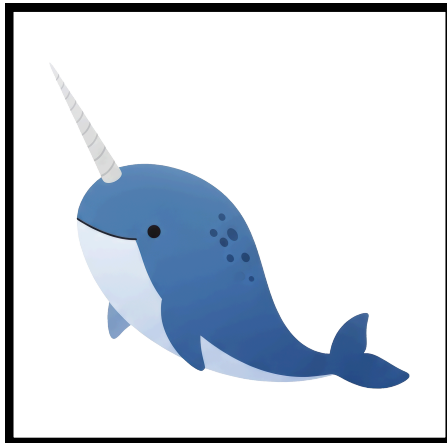
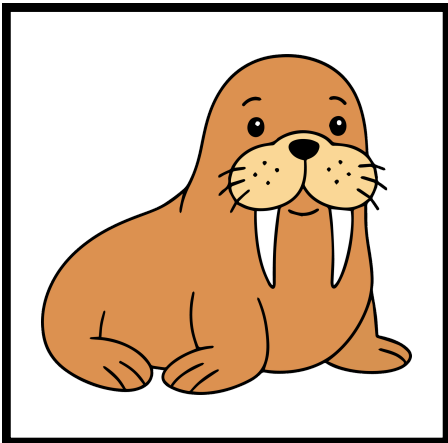
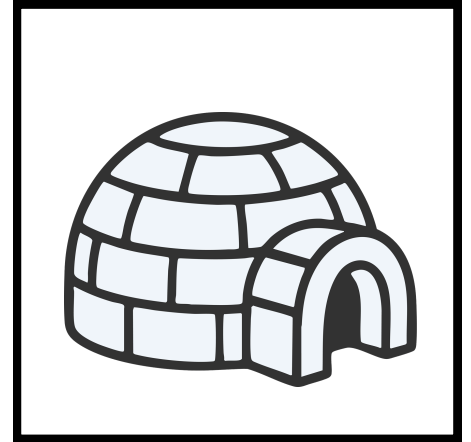


# COLD CLIMATE MEMORY

Print two copies of this page onto card stock . Cut out each square. Mix up the cards and place them all face down in front of you. Take turns flipping over two cards at a time. If you make a match, keep the set and continue playing! Continue play until all cards have been matched.



# OTHER WAYS TO PLAY:

- Make 4 copies of page 1. Cut out each square. Instead of finding 2 cards that match, flip over 4 at a time and try to find all four of the same card.
- Make 2 copies of page 1. Cut out the squares on one of the pages, and keep the other whole. Hide or place the cut out squares around the room, and place the uncut page on the board. Have students take turns finding the hidden cards. Once they find one, have them place it on the correct match on the page on the board.
  - Another alternative of this method is to hide the cut out cards in a sensory bin for students to find.
- Make 2 copies of page 1. Cut out all squares. Place one set face down in front of students. Using 9 cups or small bowls, place the other set of cards under the cups or bowls. Play typical “memory” rules.
- With each animal card that is flipped over, have students pretend to be that animal (bark for the seal, growl for the polar bear, waddle like a penguin, and so on).